

## Vi er med deg på veien

Elektro Riket AS

Kontaktperson: Morten Marius Johansen

Telefon: 971 74 122

E-post: [Morten@elektoriket.no](mailto:Morten@elektoriket.no)

Nettside: [www.elektoriket.no](http://www.elektoriket.no)



# Innhold

01	NQG-K1270 Abrasive Rail Saw	29	LK-LDZ1501 Lithium Battery Rail Drilling Machine
02	NQG-6.5 internal Combustion Rail Cutting Machine	30	LK-LDG1901 Double Lithium Battery Tamping Machine
03	NZG-31 li Petrol Engine Rail Drilling Machine	31	LK-LDC2001 Lithium Battery Cutting Machine
04	NZMZ-20 Portable Sleeper Drilling Machine	32	LK-LDM2001 Lithium Battery Portable Rail Grinding Machine Model
05	ND-4.5 Portable Petrol Tamper	33	Digital Rolling Track Gauge
06	ND-5 Petrol Rail Tamper	35	Digital Track Gauge
07	YD-22 Hydraulic Tamping Machine	36	Analogue Track Gauge
08	YCD-4 Hydraulic Turnout Tamping Machine	37	Portable Track Gauge Calibrator
09	DG-550x4 Electric Rail Tamper Unit	37	Digital Rail Corrugation Wear Gauge
10	YD-22III Auto Hydraulic Tamping Machine	38	Rail Wear Gauge
11	YD-2ZIV Smart Hydraulic Rail Tamping Machine	39	Switch Rail Lateral Wear Gauge
12	YQBJ-300 Rail Lifting And Lining Machine	40	Frog Vertical Wear Gauge
13	NLB-500 Portable impact Wrench	41	Digital Rail Straight Measuring Auler
14	NLB-2000 Petrol Engine impact Wrench	41	1 Meter Rail Straight Edge
15	NLB-300 Petrol Engine Bolt Wrench	42	Rail Cant Device
16	NLB-600 Universal Power Wrench	43	Rail Feeler Gauge
17	FMG-2.2 Electric Rail Profile Grinder	43	Rail Gap Auer
18	NGM-6.0 Rail Profile Grinder	43	Rail Feeler Gauge Gap Auer Combination
19	NGM-6.3II Rail Profile Grinder	43	Rail Thermometer
20	NCM-5.1 Frog and Switch Grinder	44	Laser Alignment Device
21	HWS-II Hydraulic Weld Trimmer	44	Rail Curve Measuring Tools
22	YLS-900I Hydraulic Rail Tensor	45	Railway Square Auer (T Auer)
23	YJT-500 Hydraulic Rail Bender	45	Rail Opening Gauge
24	YDT-900 Hydraulic Vertical Rail Bender	46	Contact Rail Gauge
25	DG-I Rail Changer	46	Platform Gauge
26	LK-RT01 Foldable Rail Trolley	47	Rolling Stock Wheel Back To Back Gauge
27	LK-LDB1901 Vertical Dual Lithium Battery Torque Wrench	48	Wheel Profile Gauge
28	LK-LDB1701X Dual Lithium Battery Universal Power Wrench	49	Railway Maintenance Tools
		51	Enterprise Honorary Qualification

## NQG-K1270 ABRASIVE Rail SAW



### INTRODUCTION

The product adopts the Swedish Husqvarna K1270 engine, which has high cutting precision, fast cutting speed, and can cut left and right. The unique magnesium-aluminum alloy saw blade cover is light in weight and no iron flings remain after cutting the rail, prolonging the service life of the saw blade cover.

### TECHNICAL DATA

Gasoline engine	Husqvarna K1270 5.8kw
Wheel speed	4700 r/min
Cylinder displacement	118.8cm <sup>3</sup>
Grinding wheel size	cp355xcp25.4x4mm;355/405mm
Maximum cutting depth	125/145mm
Dimension	895x250x460
Weight(excluding cutting disc)	14.45/15.2kg
Clamp weight	5.5kg



## NQG-6.5

## Internal COMBUSTION Rail CUTTING MACHINE



### TECHNICAL DATA

internal combustion engine	4-stroke
Power	4.0kW
Speed	3600r / min
Thin grinding wheel (spindle)	Spindle speed 3050r/min
Specification of cutting disc	<b>Ø400xØ32x4</b>
Linear speed of cutting disc	;:som/s
Machine weight	43kg
Dimension	730x630x570mm

### INTRODUCTION

01 |



It is a new generation of internal combustion rail cutting machine, the weight is greatly reduced, and the cutting speed is improved is suitable for railway laying, line maintenance, emergency repair, especially track cutting operations in sections and sections without power supply. It can be applied to rails of various specifications, especially for 50kg/m-60 kg/m rails.

## NZG-3111

### PETROL ENGINE RAIL DRILLING MACHINE



#### INTRODUCTION

NZG-3111 internal combustion rail drilling machine is a specialized machine suitable for drilling bolt holes for rail flashplates in railway track maintenance departments. Suitable for drilling 43~75kg rails. It is powered by a small gasoline engine, decelerated by a special reducer, and drives the drill pipe to rotate. The handle is used to drive the gear and rack to realize the feed, and the worm gear mechanism is clamped. A drill rod bracket is provided to ensure the accuracy of the drilling direction and prolong the service life of the drill bit. It is equipped with a special hollow drill bit. This machine enjoys the advantages of novel structure, small size, light weight, high efficiency, convenient clamping, and accurate drilling.

#### TECHNICAL DATA

Petrol engine	Honda GX35 1.2kW	Honda GX50 1.47kW
Max drilling diameter	31mm	36mm
Drill rod diameter	weldon 19	weldon 19
Spindle speed at full load	292r/min	292r/min
Drilling efficiency	30 s/hole	30 s/hole
Drilling accuracy	hole diameter error $\pm 0.5\text{mm}$ position error $\pm 1\text{mm}$	hole diameter error $\pm 0.5\text{mm}$ position error $\pm 1\text{mm}$
Dimension	720*410*430 (mm)	720*410*430 (mm)
Weight	23kg	23kg

## NZMZ-20

### PORTABLE SLEEPER DRILLING MACHINE



#### PRODUCT FEATURES

- This machine is used for powerful drilling of wooden sleepers
- Compact product design for mobility on the track
- Precise drilling with depth stop
- Adjustable engine speed
- Work safety due to centrifugal clutch

#### TECHNICAL DATA

ENGINE	2 stroke petrol engine 1.42kw
Max drilling diameter	20mm
Drill speed	350r/min
Drilling time	20s
Dimensions	420x500x1070mm
Weight	14kg

## ND-4.5

### PORTABLE PETROL TAMPER



#### PRODUCT FEATURES

The portable tamper is a kind of small track maintenance machine for railway track maintenance. It is mainly suitable for the tamping operation of stone slag by using train interval on switch and busy line. It has the advantages of light weight, small size, excellent performance, convenient and quick up and down the track and light operation.



#### 5 TECHNICAL DATA

Models	ND-4.5	ND-4
Power	Honda GX35 1.47KW	Honda GX50 1.2KW
Gasoline engine rated speed	7000rpm	7000rpm
Rated vibration frequency	117Hz	120-150HZ
Exciting force	4200N	4400N
Free amplitude	5mm	5mm
Weight	14.5kg	14.5kg

#### PRODUCT FEATURES

This portable high efficient tamping machine is suitable for breaking and tamping the track of different conditions, with characteristics of compact structure, less weight, high efficiency, easy operation, saving labor and good shock absorption.

It is suitable for crushing and tamping operations of concrete, masonry, asphalt, rock, soil, etc. The equipment adopts the piston buffer shock absorption and the body elastic shock absorption, the shock absorption effect is good, and the labor intensity in operation is minimized.



## ND-5

### PETROL Rail TAMPER



#### TECHNICAL DATA

Petro! engine	1.6KW/4600 rpm
Impact frequency	20-30 Hz
Impact energy	25-40 J
Host quality	29kg
Dimension (L X W X H)	450x333x790(mm)

## YD-22 HYDRAULIC TAMPING MACHINE



### UCT FEATURES

YD-22 hydraulic tamping machine is a kind of professional machinery used for railway line ballast tamping maintenance except for turnouts. It can be operated with train interval time, without closing sections. It is equipped with three power modes. They are petrol, diesel and electric.

### TECHNICAL DATA

Engine	GX 390 Honda Power
Power	9.7kw
Number of revolutions	2300 rpm
Working pressure of the hydraulic system	5.0MPa
Shock frequency	65-70Hz
Shock force	22 kN
Maximum lower insertion force	16 kN
Clip strength	7.4 * 2 kN
Lower insertion depth	110 ± 10mm(below the bottom of the sleeper)
Production efficiency	270 / root / group hour
Net weight of the host	395kg
Overall dimension	1460 * 7250 * 1740mm
Form of operation	double-cylinder lifting
Rail gauge	1520mm (instructions for special needs)

## YCD-4 HYDRAULIC TURNOUT TAMPING MACHINE



### PRODUCT FEATURES

YCD-4 hydraulic turnout tamping machine is a special maintenance mechanical equipment for railway turnouts. It is mainly used for tamping the sleeper ballast in the turnout section, and can also take into account the tamping effect of the main track bed ballast.

### 1. TECHNICAL DATA

## DG-550 x4 ELECTRIC RAIL TAMPER UNIT

### PRODUCT FEATURES

DG-550x4 electric rail tamper set is used for equipping a tamping team for four person to tamp different kind of sleepers with ballast or gravel. Completed with 4 vibratory tampers and 1 5kw generator with connecting cable. Can moving freely on the track by the walking frame which can be customized by precise rail gauge.



### TECHNICAL DATA

Motor power	550W
Motor voltage	380V
Motor speed	2880r/min
Exciting frequency	50HZ
Exciting force	3kN
Pick plate form	elastic
Damping material	rubber block
Overall weight	27kg
Dimensions	1060x700x200

## YD-22111

## AUTO HYDRAULIC TAMPING MACHINE



### PRODUCT FEATURES

YD-22111 Auto hydraulic tamping machine is an updated product developed by SRMF based on the experience of domestic and foreign users on the tamping machine, using new materials and new technologies. This machine is suitable for the tamping operation after the large-scale and middle-repair cleaning operations of different types of rails and concrete sleeper lines; it is also suitable for the tamping operation of the ballast on the newly-built line. The automatic hydraulic running function is added, which can realize non-human Push forward or backward. The machine has superior performance, reasonable structure safety and reliability, and high operating efficiency, which fully meets the needs of railway ballast tamping operations.

### TECHNICAL DATA

Engine	Honda GX390 four-stroke petrol engine
Power	9.5kW
RPM	3600r/m
Hydraulic system pressure	5-6MPA
Vibration frequency	60.7Hz
Exciting force	22kN
Max. insert force	16kN
Clamping force	6.5kNx2
Inserting depth	110mm±10mm
Production efficiency	;;i:260 sleepers/hour
Weight	1275kg
Dimensions	2440x1860x2050mm
Traveling frame gauge	1435mm (according to customer's requirement)

## VD-2ZIV

### SMART HVDRAULIC Rail TAMPING MACHINE

#### PRODUCT FEATURES

YD-22IV automatic hydraulic rail tamping machine is a new design based on YD-2211 hydraulic rail tamping machine. It adds the walking and electric control devices, achieve the functions of automatic walking and remote control, etc. It reduces labor intensity and improves work efficiency. The machine is suitable for tamping operation on various rail and concrete sleeper track after the overhaul and medium ballast cleaning operation, and also suitable for tamping operation on the ballast bed of new track. This machine has the features of high quality performance, reasonable structure, reliable and high working efficiency, which will satisfy the requirement of ballast tamping operation.



#### TECHNICAL DATA

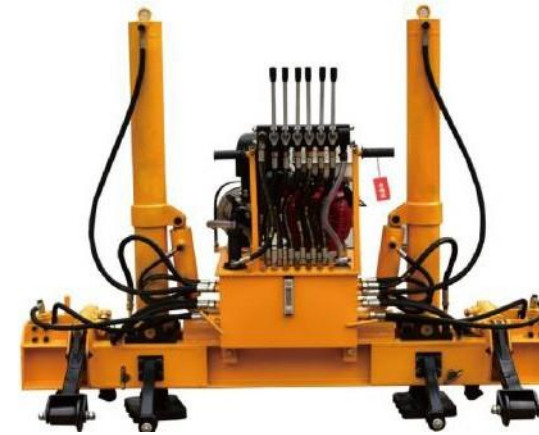
Engine	4-Stroke Gasoline engine B & S 25T2
Engine power	13.5HPx2
RPM	3600 r / min
Hydraulic system working pressure	5-6MPA
Vibrating frequency	66.7Hz
Vibrating force	22kN
Max inserting force	16kN
Max clamping force	6.5kNx2
Insert depth	90mm -110mm ( under the sleeper)
Production efficiency	260 pieces / (unit. hour)
Machine weight	1385kg
Overall size (LxWxH)	2150 mm x 2200 mm x 1900 mm
Walking frame track gauge	1435 (adjustments can be made according to customer requirement)

## VQBJ-300

### Rail LIFTING AND LINING MACHINE

#### PRODUCT FEATURES

The product has the functions of lifting and lining. Its structure is simple, light, flexible, safe and reliable. This machine is powered by Honda GX390 petrol engine, drives gear pump, and controls the work of each cylinder by multi-way reversing valve, so as to realize the movement of machine in place, hook rail tilt and lift.



#### TECHNICAL DATA

Engine	GX390 Honda
Power	9.5kw
System working pressure	20Mpa
Maximum lifting force	150*2KN
Lifting distance	850mm
Maximum lining force	130KN
Lining amount	150mm/time
Maximum stroke of starting cylinder	1000mm
Hand pump handle operating force	<220N.m
Overall dimensions	1916x980x1425mm
Overall machine weight	560kg



## NLB-500 PORTABLE IMPACT WRENCH



### PRODUCT FEATURES

NLB-500 portable impact wrench has compact structure, small size, light weight, two-stage shock absorption at the handle, which is suitable for large and medium railway maintenance, such as turnout, tunnel, bridges etc.

### TECHNICAL DATA

Engine	two-stroke gasoline engine
rated revolutions	11000r/min
power	1.42kW
Spindle speed	800r/min
rated torque	≥500N.m
Torque	≥500N.m
Weight	18kg

## NLB-2000 PETROL ENGINE IMPACT WRENCH



### PRODUCT FEATURES

NLB-2000 petrol engine impact wrench is mainly used to tighten rail fasteners in railway construction or maintenance operations. Tightening or loosening of nuts on bolts and splints. The machine adopts the principle of energy superposition and utilizes the instantaneous peak torque. The method of repeated impact action is used to tighten or loosen the nut. This machine is compact in structure, light in weight and portable. It is convenient to tighten and loosen the nuts on the connecting bolts arranged in different directions, such as vertical, horizontal and inclined. Especially for the nut which is not easy to loosen due to corrosion and other reasons, the use of this wrench has its unique effect.

### TECHNICAL DATA

Petrol engine	Oleo-mac GS650 2stroke
Power	3.5 kW at 9,000 rpm
Engine capacity	63.4 cm <sup>3</sup>
Max torque when unscrewing bolts	2500 Nm
The max torque twisting	1200 Nm
Suitable nut size	M75
Overall dimensions (mm)	620x455x285
Square head seat	1"
Vibration level	5.3 m/s <sup>2</sup>
Weight	19kg

## NLB-300 PETROL ENGINE BOLT WRENCH



### PRODUCT FEATURES

This trolley is suitable for transporting small equipment and accessories on the track, and it is easy to use. The wheels of the whole trolley are made of nylon wheels, which have good insulation performance and are equipped with braking devices, which are safe and reliable, light in weight, and high in operation efficiency. This vehicle can only be driven on lines within a blockade or possessive interval for construction

### TECHNICAL DATA

Type	NLB-300
Main shaft rev	780r/min
Rated loosening torque	300 N•m
Rated fastening torque	150 N•m
Max. output torque	1100 N•m
Working efficiency	10 pieces/min
Engine model	Honda GX160 petrol engine
Engine rated power	4kw
Engine rated rev	3600r/min
Weight	60kg
Dimension	1300*510*760

## NLB-600 UNIVERSAL POWER WRENCH



### PRODUCT FEATURES

NLB-600 universal power wrench can quickly and easily tightens and loosens all wrenched joints along the track. Accurately controlled and stable. This machine uses gasoline engine as power, the output shaft is single-head, single-speed, forward and reverse adjustable, output torque can be manually adjusted and accurately displayed, the whole machine is easy to operate, safe and reliable, and convenient to go up and down, and can be equipped with lighting lamps for supply Lighting at the sleeve head during night work.



### TECHNICAL DATA

Petrol engine output power	4.5kW/3600rpm
Output shaft speed	130rpm
Torque	20-450N.m (stepless adjustment) 600N.m (instantaneous)
Size	1775x525x690mm
Weight	Machine 88kg Wrench support rod 4kg
Socket specification	Suitable for hexagon nuts of M22, M24, M27, M30
Average noise emission	85db(A)

## FMG-2.2 ELECTRIC RAIL PROFILE GRINDER

### PRODUCT FEATURES

The design of FMG-2.2 electric rail profile grinder allows you accurate and stable profile grinding up to 90° about the rail head by rotation of the machine using its turning device and its inclinable operating arm. According to customer needs, 380V three-phase motor can be selected as power or 220V single-phase power as power. With good visibility of the grinding area assures you of a high quality finish.



### TECHNICAL DATA

Engine	2.2kw 380V or 220V electric motor
Grinding stone speed	2860r/min
Grinding stone specification	cp150xcp50x70mm
Grinding stone feeding stroke	50mm
Turning angle of grinding stone	90°
Dimensions	1200x420x900mm
Weight	80kg

## NGM-6.0 RAIL PROFILE GRINDER



### PRODUCT FEATURES

This machine is powered by the M165 two-stroke petrol engine imported from Spain. It is a small machine used for forming and grinding the rail head welding joints and surface repairs. It is suitable for rails of 43- 75kgm.

The special diaphragm carburetor makes sure the engine does not stall after turning 90°, and the output torque is stable without power attenuation, thus ensuring the precision of rail grinding.

### TECHNICAL DATA

Engine	2 stroke petrol engine M165
Power	6.0kW
Grinding stone specs	;;,39oor/min
Grinding stone inclination	0-90°
Grinding stone feeding stroke	42mm
Grinding stone specification	cp150xcp55x70mm
Fuel tank volume	4.5L
Profile wheel span	1000mm
Feed adjustment accuracy	0.125mm
Dimensions	1410x500x850mm
Weight	60kg

## NGM-6.311

### RAIL PROFILE GRINDER



#### ICT FEATURES

NGM-6.311 digital control pro-filing rail grinder, with petro! engine. Mainly used for the restoration and grinding of welded joints, calendering burrs, rail surface repair, waveform wear, etc. in the maintenance and construction of railway rails.



#### TECHNICAL DATA

Gasoline engine power	6.3kw/3600rpm
.Single chip microcomputer running speed	16 MIPS
LCD display resolution	128 x 64 DOTS
Magneto output voltage	~12V
External charging power supply	~220 V
Effective stroke of grinding wheel	40mm
Profile track	1010 mm
Profile deflection angle	± 90°
Grinding wheel inching feed accuracy	0.01~0.5 mm(instant setting)
Working environmental temperature	-40 °C ~+70 °C
Outline size of main engine (length x width x height)	1565 x 550 x 973 (mm)
Main engine mass	98 kg

## NCM-5.1

### FROG AND SWITCH GRINDER



#### PRODUCT FEATURES

NCM-5.1 frog and switch grinder is specifically designed for grinding operations through switch and crossings and either side of the rail head. The grinding device of the machine can be tilted by 30° from the vertical direction to the left and right, and the position of the grinding wheel can be adjusted along the vertical and horizontal directions. So that the grinding device of the machine can work very accurately in the narrow space between the rails. The machine adopts the pull rod transverse feed mode, which is easy for the operator to grasp the feed force and improve the grinding quality and efficiency. It has the characteristics of precise turning and positioning at any position and angle of the turnout rail

#### TECHNICAL DATA

Engine	Honda GX270 Petro! engine
Rated power	Rated power
Grinding wheel speed	3600r/min
Grinding wheel feeding stroke	80mm
Feed adjustment accuracy	10mm
Grinding wheel rotation angle	30°
Dimensions	2100x1120x1030mm
Weight	117kg

## HWS-11 HYDRAULIC WELD TRIMMER



### PRODUCT FEATURES

This machine was used in the production of the thermit welding of rail joints, suitable for 50-75kg/m various types of rail.

### BENEFITS

Individual adapted shear blades are pressed together by double-acting hydraulic cylinders. No hot cracks on the weld, due to coincident shear blade attach from both sides.



### TECHNICAL DATA

Shear force at max.	200kN
Max. travel	150mm
System working pressure	51MPa
Dimensions	800x390x400mm
Weight	75kg

## VLS-9001 HYDRAULIC Rail TENSOR



### PRODUCT FEATURES

It's suitable for 75kg/m and 60kg/m type rail stress relief and seamless lang rail relaying. While operating in the neid at a certain temperature range being lower than the rail locking temperature, by employing this machine, the length of a rail with zero-stress can be forced to stretch to a length at locking temperature, then re-lock the rail.

### BENEFITS

Compared with the similar products, it possesses features of unique design, light weight, simple & convenient manipulation and powerful rail pulling force.

### TECHNICAL DATA

Max. rated working pressure	57MPa
Max. rail pulling force	2*450kN
Max. stroke of workin cylinder	;;i:500mm
Two pull rod center distance	535mm
Lock mode	wedges clamp on both sides of rail head
Pump model	Honda GXV160
Power	3.05kW
Rate of flow	;;i:3L/min
Machine weight	283kg
internal combustion pump station weight	75kg (not including pipeline)
Dimension	1300*690*240mm

## VJT-500 Hydraulic Rail BENDER



### PRODUCT FEATURES

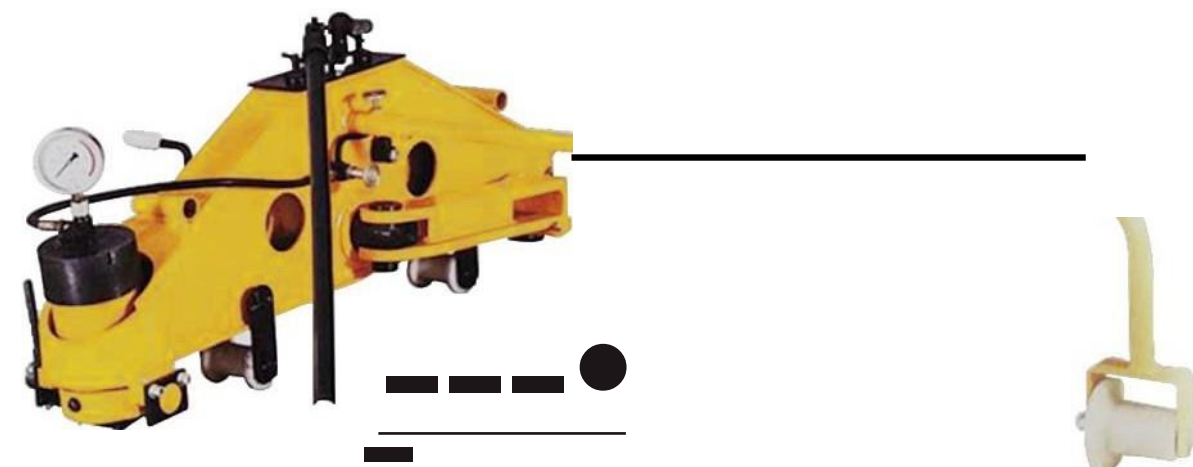
The VJT-500 Hydraulic Rail Bender is a manual hydraulic tool for straightening or bending various types of switch rails on or off the railway line.



### TECHNICAL DATA

Rated compressive force	500kN
Working pressure	70MPa
Max. Bending distance	4mm
Pivot point distance	1000mm
Max Cylinder stroke	84mm
Dimensions	1300x510x438mm
Weight	135kg

## YDT-900 Hydraulic Vertical Rail BENDER



### PRODUCT FEATURES

This machine is used for the bending operation of railway seam lines and welded joints of seamless tracks and other low-collapsed parts of steel rails. It can also be used as vertical bending and supporting equipment in the laying of seamless tracks; suitable for all types Rails. The machine has simple structure, convenient operation, safe operation and easy maintenance. It is an effective tool for rectifying rail joint problems.



### TECHNICAL DATA

Max bending force	900kN
Hydraulic system pressure	47MPa
Working stroke	120mm
Pivot point distance	1200mm
Dimensions	1435X696X385mm
Weight	185kg

## DG-1 Rail CHANGER



### PRODUCT FEATURES

This equipment is suitable for replacement of old and new track, switch and frog cores. There are walking wheels on the side, which can be pushed during transportation. It has the characteristics of height adjustable, lateral locking, light weight, convenient handling, and wide application range.

Optional small rail car, which can transport tracks, switch and frog centers. The wheel adopt nylon wheels, which have good insulation performance and are equipped with brake devices. It is a railway ideal special too for transporting tracks for construction work.

### TECHNICAL DATA

SMALL GRANE	
Rated lifting force	1T
Lifting stroke	1 meter
Rail hook form	Sliding self-locking
Dimensions	2410x700x1540mm
Weight (single crane)	23kg

RAIL CAR	
Dimensions	1730x880x800mm
Weight of rail car	35kg
Loading capacity	500kg
Braking method	Drum brake
Running wheel	insulated

## IK-RT01 Foldable Rail Trolley



### PRODUCT FEATURES

This trolley is suitable for transporting small equipment and accessories on the track, and it is easy to use. The wheels of the whole trolley are made of nylon wheels, which have good insulation performance and are equipped with braking devices, which are safe and reliable, light in weight, and high in operation efficiency. This vehicle can only be driven on lines within a blockade or possessive interval for construction

### MAIN TECHNICAL PARAMETERS

Rated load	1000kg
Load braking distance	300mm
Trolley weight	37KG
Dimensions	1700mmx700mmx700mm
Rail gauge	1435mm
Operating track slope	12‰

## LK-LDB1901 VERTICAL DUAL LITHIUM BATTERY TORQUE WRENCH



### PRODUCT FEATURES

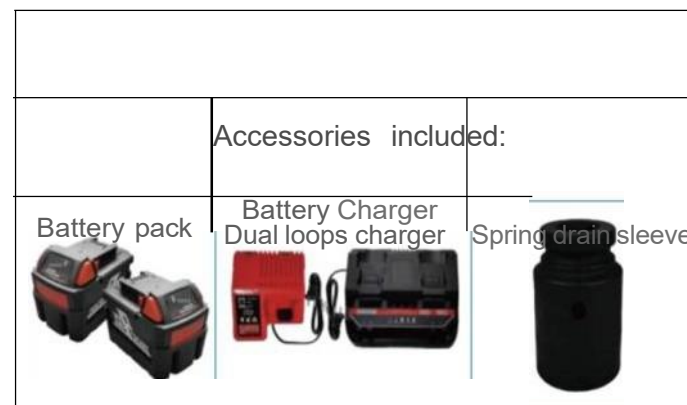
Vertical dual lithium battery torque wrench (model: LK-LDB1901) vertical operation Railway digital torque wrench with dual lithium battery protection technology. Its working torque > 3000N.m, torque can be adjusted and controlled, professional for railway bolting operations.

Vertical dual lithium battery torque wrench (model: LK-LDB1901) consists of a joystick, motor, and reducer which has a unique ergonomic balance design to make the machine more safety, saving effort and high efficiency, and its unique overall waterproof design ensure the needs of all-weather construction. Torque adjustment and compensation function provide precise torque control to meet construction needs.

- The whole machine passed the strict protection level verification, supporting all-weather work;
- Professional lithium battery platform, long endurance operation;
- The equipment can be used under extreme conditions such as freezing cold and high altitude;
- Lithium battery through the national authority safety test;
- Impact frequency: 0-5000bpm, can be customized according to requirements;
- Adjustable strap design, more convenient handling and transfer.

### SPECIFICATIONS

Model	LK-LDB1901
Rated voltage (DC.V)	18-36
Motor speed (rpm)	0-3000 (optional)
Impact Frequency (bpm)	0-5000 (optional)
Weight (kg)	7
Max torque (N.m)	>3000
Battery pack capacity (Ah)	18-36
OTR(°C)	-40-50
Torque display	Digital display
Torque Control	Adjustable



## LK-LDB1701X DUAL LITHIUM BATTERY UNIVERSAL POWER WRENCH



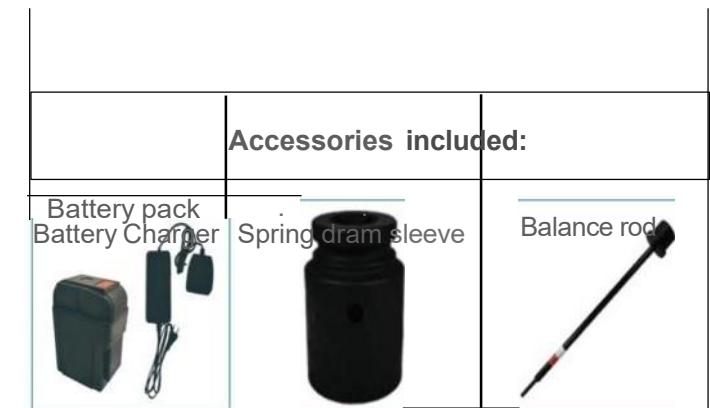
### PRODUCT FEATURES

Dual lithium battery universal power wrench (model: LK-LDB1701X) consists of motor, control system battery system and track mobile part. It has a compact structure, Light weight, easy to assembly and disassembly, easy to use, zero exhaust emissions. It can be transported separately, which is convenient for one person to carry on, and the weight of the split part is less than 15kg. Suitable for railway laying, maintenance, rescue, professional and all kinds of railway bolt operations.

- The whole machine passed the strict protection level verification, supporting all-weather work;
- Professional lithium battery platform, long endurance operation;
- The equipment can be used under extreme conditions such as freezing cold and high altitude;
- Lithium battery through the national authority safety test;
- Impact frequency: 0-5000bpm, can be customized according to requirements;
- The integrated torque can be displayed and adjustable with torque compensation;

### SPECIFICATIONS

Model	LK-LDB1701X
Rated voltage (DC.V)	36
Motor speed (rpm)	0-3000 (optional)
Impact Frequency (bpm)	0-5000 (optional)
<b>Weight (kg)</b>	<b>35</b>
Max torque (N.m)	>3000
Battery pack capacity (Ah)	24-48
OTR(°C)	-40-50
Using the operating range	<b>M6-M30</b>
Torque Control	Adjustable





## LK-LDZ1501

### LITHIUM BATTERY Rail DRILLING MACHINE





#### PRODUCT FEATURES

Lithium battery rail drilling machine (Model: LK-LDZ1501) is composed of feed assembly, lithium battery pack, power assembly, clamping assembly and cooling water supply assembly. It is with compact structure, small volume, light weight, flexible clamping, easy to use, high drilling accuracy, no exhaust emissions, suitable for railway line laying, maintenance, repair, professional for all kinds of rail drilling.

- The whole machine passed the strict protection level verification, supporting all-weather work.
- Professional lithium battery platform, long endurance operation.
- The equipment can be used under extreme conditions such as freezing cold and high altitude.
- Lithium battery has passed the national authority safety test.
- Light in weight, more convenient in handling and transfer.

#### SPECIFICATIONS

Model	LK-LDZ1501	Accessories included:	
idle speed (rpm)	0-400		
Drill diameter (mm)	9-36	Battery pack	Battery charger
Weight (kg)	15		
Lighting system	LED light		
Bit damping	Tool free-quick bit replacement		
OTR(°C)	-40-50		
Battery type	Lithium-ion battery pack		

## LK-LDG1901

### DOUBLE LITHIUM BATTERY TAMPING MACHINE






#### PRODUCT FEATURES

Double lithium battery tamping machine (Model: LK-LDG1901) easy to carry and operate. Produce no exhaust gas in use, clean and environmental protection. Effectively reduce vibration, noise during operation to achieve high reliability and low failure rate. With special pick, professional for railway ballast tamping operation.

- The whole machine passed the strict protection level verification, supporting all-weather work;
- Professional lithium battery platform, long endurance operation.
- The equipment can be used under extreme conditions such as freezing cold and high altitude;
- Lithium battery has passed the national authority safety test.
- No pollution caused, stable and reliable in operation;
- Simple and light weight, convenient to carry.
- APP intelligent lithium battery management platform.
- New vibration mode provides more excellent vibration effect;
- Pick can be replaced according to road needs

#### SPECIFICATIONS

Model	LK-LDG1901
Dimension (mm)	100x485x355
Rated voltage (DC.V)	36
Battery pack capacity (Ah)	24-48
Acceleration of handle (m/s <sup>2</sup> )	10
Non-loaded amplitude (mm)	1.35
Vibration frequency (Hz)	190
Weight (kg)	20
OTR(°C)	-40-50

Accessories included:		
Battery pack	Battery Changer	Tamping pick
		

## LK-LDC2001 LITHIUM BATTERY CUTTING MACHINE



### PRODUCT FEATURES

Lithium battery cutting machine (Model: LK-LDC2001) Specialized in rail cutting operations.

- The whole machine passed the strict protection level verification, supporting all-weather work;
- Professional lithium battery platform, long endurance operation;
- The equipment can be used under extreme conditions such as freezing cold and high altitude;
- Lithium battery has passed the national authority safety test;
- Adjustable limit fixture, adapt to all kinds of rail shape double cutting;
- Light in weight, more convenient in handling and transfer.

## LK-LDM2001 LITHIUM BATTERY PORTABLE RAIL GRINDING MACHINE






### PRODUCT FEATURES

Lithium battery portable rail grinding machine (Model: LK-LDM2001), specialized in rail grinding.

- The whole machine passed the strict protection level verification, supporting all-weather work;
- Professional lithium battery platform, long endurance operation;
- The equipment can be used under extreme conditions such as freezing cold and high altitude;
- Lithium battery has passed the national authority safety test;
- Adjustable limit clamping device, adapt to all kinds of rail profile inner and outer side grinding job;
- Adopt sealed high-power brushless DC motor to grind the weld joints efficiently;

### SPECIFICATIONS

Model	LK-LDC2001
Rated voltage (AC.V)	220
Motor speed (kw)	7
Weight (kg)	13
Battery pack capacity (Ah)	12-20 (optional)
OTR(°C)	-40-50

Accessories included:		
Battery pack	Battery Charger	Rail lock chuck
		

### SPECIFICATIONS

Model	LK-LDM2001
Motor speed (kw)	7
Weight (kg)	60
Continuous grinding time	1-5
OTR(°C)	-40-50

Accessories included:	
Battery pack	Battery charger
	

## DIGITAL ROLLING TRACK GAUGE



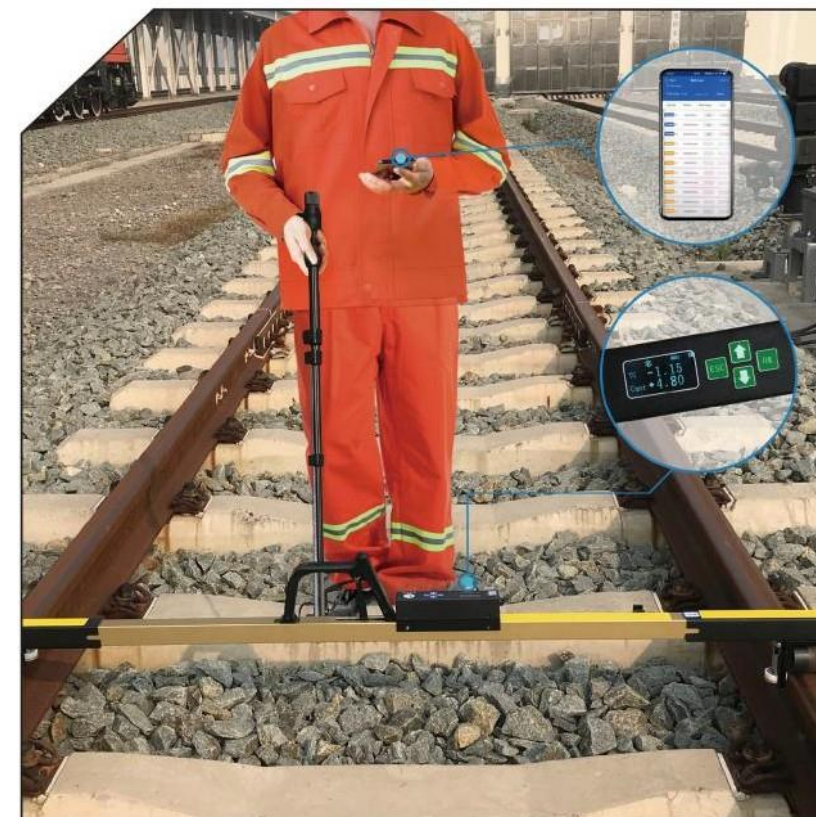
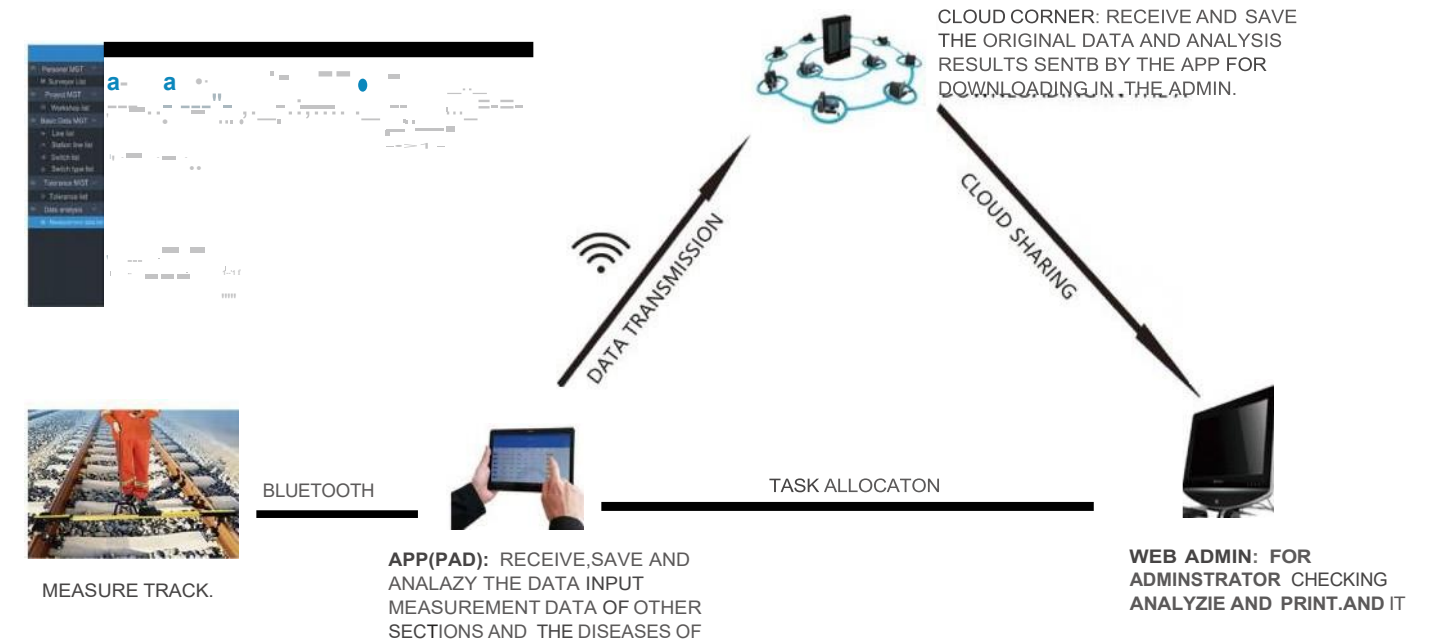
### PRODUCT INTRODUCTION

The portable rolling track gauge is designed for measuring the track gauge and super-elevation. The lightweight, reliable and easy to use device offers unique measurement accuracy.

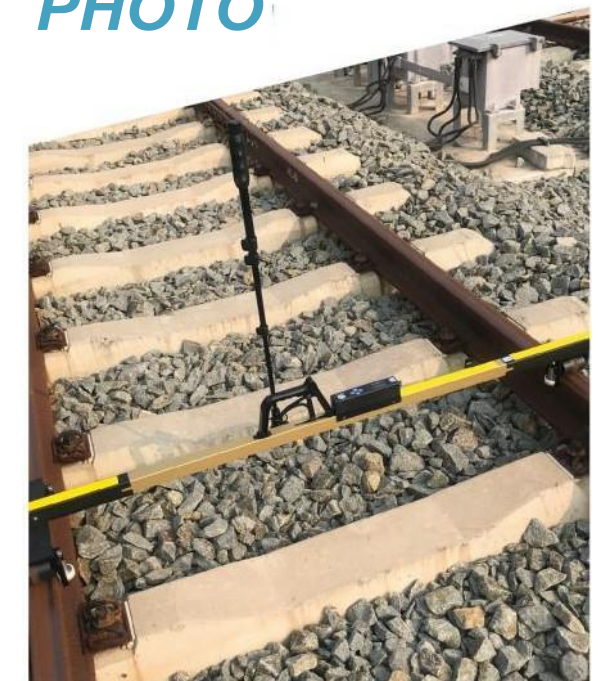
The software system support for storing and analyzing the measuring data. It can be used for track inspection and rail maintenance. It is easy to carry, and night-time and tunnelwork, legible even in direct sunlight are supported which is an ideal measuring tool for track fine-tuning, track construction, inspection and track laying.

### MODEL PARAMETERS

Model (1435mm)	GJC-JJGO
Track Gauqe(mm)	1410-1470
Superelevation measuring range	-185~+185
Display mode	OLED display and hand-held terminal display
Supply Voltage	DC3.4V~5.2V (rechargeable battery)
Superelevation division value	0.05
Working temperature	-30°C~+55°C
Insulation performance	>1MO
Track gauge division value	0.01mm
Superelevation division value	0.05mm
Track gauge max indication error	:s;;;±0.25mm
Superelevation max indication error	:s;;;±0.3mm
Length	<1700mm
Net Weight	6.5kg



## PRODUCT PHOTO



## DIGITAL TRACK GAUGE



### PRODUCT INTRODUCTION

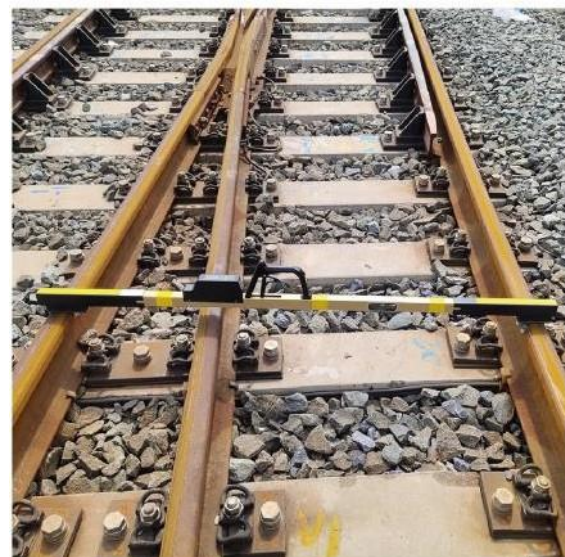
This digital track gauge is a special design for global market. It is used for measuring the track gauge, check rail gauge, back to back distance, cant (superelevation), flangeway clearance.



### MODEL PARAMETERS

unit(mm)

Model	GJC-TJG0	GJC-TJG1
Track gauge	1384-1470	1384-1470
Check rail gauge	1364-1450	1364-1450
Back to back distance	1344-1430	1344-1430
Superelevation range	±200	±200
Flangeway clearance	20-107	20-107
Superelevation resolution	0.05	0.1
Track gauge resolution	0.01	0.1
Track gauge max error	±0.25	±0.25
Superelevation max error	±0.3	±0.45
Aluminum package box	optional	



Details for other gauges e.g. 1000 1067 1520 1600 1676 and imperial type available on request.

## ANALOGUE TRACK GAUGE



### PRODUCT INTRODUCTION

The analogue track gauge is used for measuring:

- Track gauge
- Check rail gauge
- Back to back distance
- Superelevation



### MODEL PARAMETERS

unit(mm)

Model	TGC-W-11 1000	TGC-W-11 1067	TGC-W-11 1435	TGC-W-11 1520	TGC-W-11 1600	TGC-W-11 1676
Track gauge	975-1030	1042-1102	1410-1470	1493-1560	1575-1635	1650-1712
Check rail gauge	950-970	1013-1033	1381-1401	1466-1486	1546-1566	1622-1642
Back to back distance	907-927	970-990	1338-1358	1423-1443	1503-1523	1579-1599
Superelevation range	±150	±150	±150	±150	±150	±150
Superelevation resolution	1	1	1	1	1	1
Track gauge resolution	1	1	1	1	1	1

Other analogue track gauges: 600mm, 900mm

## PORTABLE TRACK GAUGE CALIBRATOR



### PRODUCT INTRODUCTION

The portable track gauge calibrator is used to calibrate the 1435mm track gauge. It can calibrate the track gauge, check rail gauge and guard rail face gauge, and check the correctness of the superelevation zero position.

### MODEL P. R MEIERS

unit(mm)

C	g	LJ-JDQ-111
	Track gauge	1435
	Check rail gauge	1391
	Back to back distance	1348
	Calibration	±0.2



## DIGITAL RAIL CORRUGATION WEAR GAUGE



### INTRODUCTION

This digital corrugation wear gauge is a direct reading measuring tool which is used straight vertical measurement method. It is mainly used for measuring rail top surface and side surface corrugation wear value.

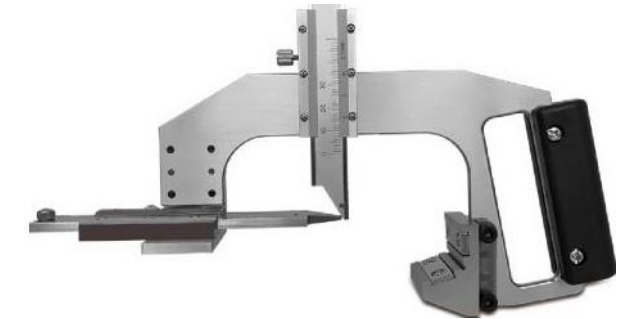
### MODEL PARAMETERS

unit(mm)

Model	LJ-BM-A
Horizontal Measure Range	1000mm
Vertical Measure Range	-8-+25mm
Accuracy	±0.05mm
Resolution	0.01mm
Repeat error	0.02mm
Working temperature	-5°C--40°C



## RAIL WEAR GAUGE



### PRODUCT INTRODUCTION

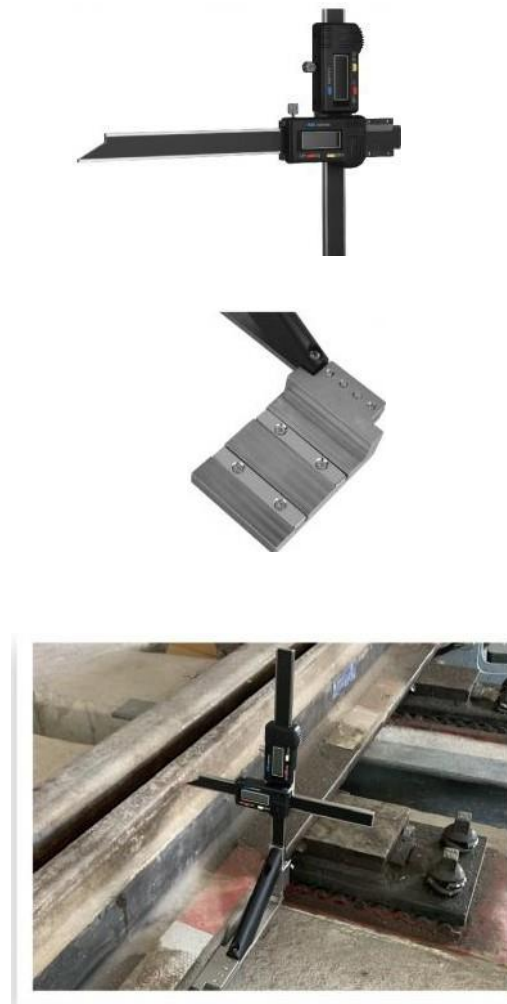
Rail wear gauge (rail head loss gauge) is mainly used to measure the vertical wear and lateral wear of the rail. The reasonable design makes it easy to operate and intuitive to read.

### TECHNICAL PARAMETERS

unit(mm)

Model	LJ-GM-A	LJ-GM-B
Type	Digital	Mechanical
Vertical rail wear	0-15	0-15
Lateral rail wear	0-25	0-25
Score value	0.01	0.1
Customize	yes	yes
Option device	Gauge block for wear gauge fast calibration	

## SWITCH Rail LATERAL WEAR GAUGE



### MODEL PARAMETERS

unit(mm)

Model	LJ-JGCM- I
Type	1. Vertical Ruler: Digital 2. Lateral Ruler: Digital
Measure range	1. Vertical Ruler: 92-193 2. Lateral Ruler: 0-120
Resolution	Digital ruler: 0.01
Calibration block	Optional

### INTRODUCTION

The Switch Rail Lateral Wear gauge is used to measure the switch rail lateral wear and the descent height value of the switch rail, it can be used for all types of switch rail.

## FROG VERTICAL WEAR GAUGE



### DUCT INTRODUCTION

Frog vertical wear gauge is used to measure vertical wear value of frog point rail and wing rail at any sections. It also could be used for measuring the decrease value of point rail relative to wing rail. It has the advantages of high measuring accuracy, easy to operate, high reliability, small volume, light weight etc.



### PARAMETERS

Model	LJ-JXC
Measurement range	0-40mm
resolution	0.01mm
Working temperature	-1 0°C-+40°C
Main ruler scale	0-380mm
Reading accuracy	1mm
Dimension	380mmx160mmx25mm

## DIGITAL Rail STRAIGHT MEASURING RULER



### PRODUCT INTRODUCTION

Digital rail straight gauge instead of traditional straight edge and feeler gauge. Easier to read value and save working time.

### MODEL PARAMETERS

unit(mm)

<b>Model</b>	<b>LJ-ZD- I</b>
Measurement range	±5
indication error	±0.06
Type	1000



## Rail CANT DEVICE



### P.RODUCT INTRODUCTION

The device is mainly for measuring rail inward inclination (cant) 1: 40 or 1: 20. In order to make the top of the rail track under the wheel load with cone tread stressed uniformly, decrease load offset, reduce rail web stress, avoid slit between rail head and rail web, the railway track shall not be laid upright for straight line.

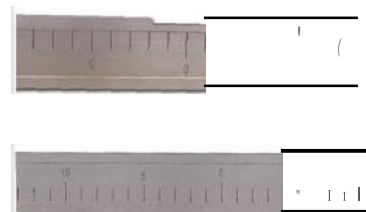


## 1 METER Rail STRAIGHT EDGE



### PRODUCT INTRODUCTION

This item is used to check track rail from any deflections before and after welding.



### MODEL PARAMETERS

unit(mm)

<b>Model</b>	<b>LJ-PC-1000</b>
Measurement range	-50-+50
indication error	0.04
Type	1. No groove 2. With groove
1500mm and 2000mm is available	

### MODEL PARAMETERS

<b>Model</b>	<b>JG-S01</b>
Power Supply Mode	Built-in lithium battery charging
Operating Voltage	3.5V-4.2V
Charging Voltage	4.5V-5.5V
Operating Current	40mA
Operating Temperature	-30°-+60°
Display	OLED
Measuring Range	±1:10-+ 1:200
Size	225x90x60mm
Weight	1.4KG



## Rail FEELER GAUGE



### PRODUCT INTRODUCTION

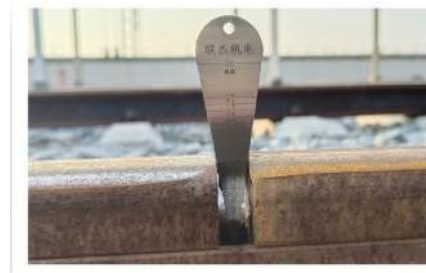
This item is used to check track rail from any deflections before and after welding.

## Rail GAP RULER

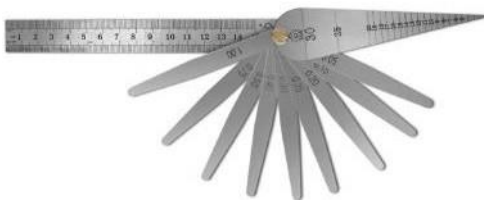


### PRODUCT INTRODUCTION

This item is used to check track rail from any deflections before and after welding.



## Rail FEELER GAUGE GAP RULER COMBINATION



### PRODUCT INTRODUCTION

This ruler combination includes rail feeler gauge, rail gap ruler and steel ruler.

### PRODUCT INTRODUCTION

Magnet pointer rail thermometer is used to measure the temperature of rail. rail thermometer is not only dedicated to measuring the temperature of the railway rails, but also can measure the air temperature and the surface temperature of other objects.

### MODEL PARAMETERS

Model	Temperature measuring range	Division value	Accuracy level
JGGW-II	-40°C-+70°C	1°C	1.0°C

## RAIL THERMOMETER



## LASER ALIGNMENT DEVICE

### PRODUCT INTRODUCTION

This portable device offers you a modern method to measure track level! and line to aid track measurement and hand tamping operations. It is special suitable for working at night.



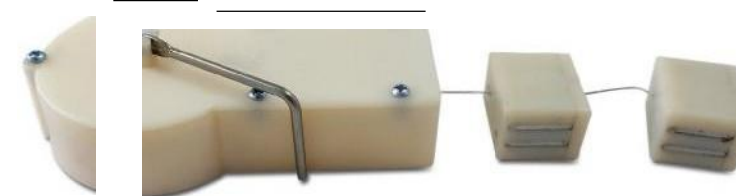
### MODEL PARAMETERS

unit(mm)

Mode!	LJ-BXJG	
Measure distance	30m	
Center laser spot	< 10mm(at 30m)	
Point range	horizontal	(-30-+50)mm
	vertical	(-30-+50)mm
Accuracy	2mm	
Gross weight	1.5Kg	
Battery	2000mAh (continuous using 5-6hours)	



## RAIL CURVE MEASURING TOOLS



### PRODUCT INTRODUCTION

For easy checking and determination of versines in track curves. It can be used for all common rail profiles. Magnet type.

### MODEL PARAMETERS

Model	Measure range	Weight	Dimension
ZSH-20	20m	153g	113x66x26mm
ZSH-30	30m	154g	113x66x26mm
ZSH-40	40m	155g	113x66x26mm
ZSH-50	50m	156g	113x66x26mm

## RAILWAY SQUARE RULER (T RULER)



### PRODUCT INTRODUCTION

Railway square ruler is a special measuring tool used to check the perpendicularity between two sections of rail

Multifunction's:

1. Measure the perpendicularity between angle steel and rail
2. Measure the perpendicularity between switch bar and rail
3. Measure the alignment of the switch rail
4. Measure the perpendicularity between sleeper and rail

### MODEL PARAMETERS

Model	SIZE
LJFG-I	1760
LJFG-IA	2000

unit(mm)



## RAIL OPENING GAUGE



### PRODUCT INTRODUCTION

Rail opening gauge is mainly used for measuring turnout opening and offset gauge. Small design and convenient to use for some special measuring points.



### MODEL PARAMETERS

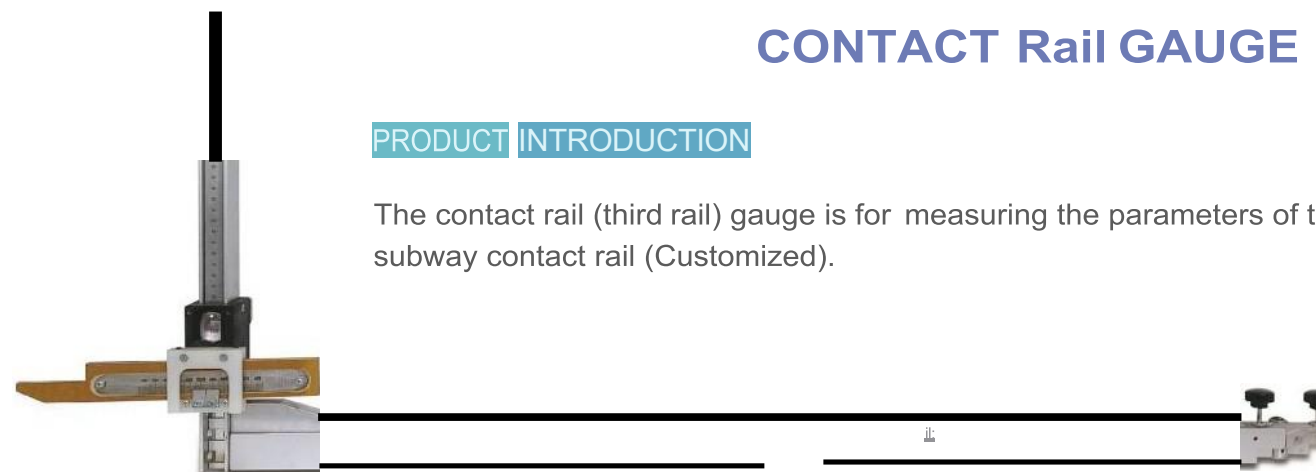
unit(mm)

Model	JG-KC01
Type	Electrical
Opening measure range	0-350mm
Offset measure range	0-350mm
Accuracy	±0.25mm
Customize	yes
Working temperature	-30°C-+55°C

## CONTACT Rail GAUGE

### PRODUCT INTRODUCTION

The contact rail (third rail) gauge is for measuring the parameters of the subway contact rail (Customized).



### MODEL PARAMETERS

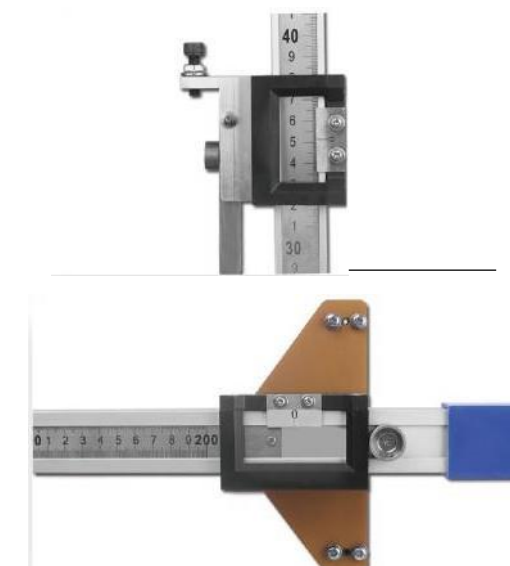
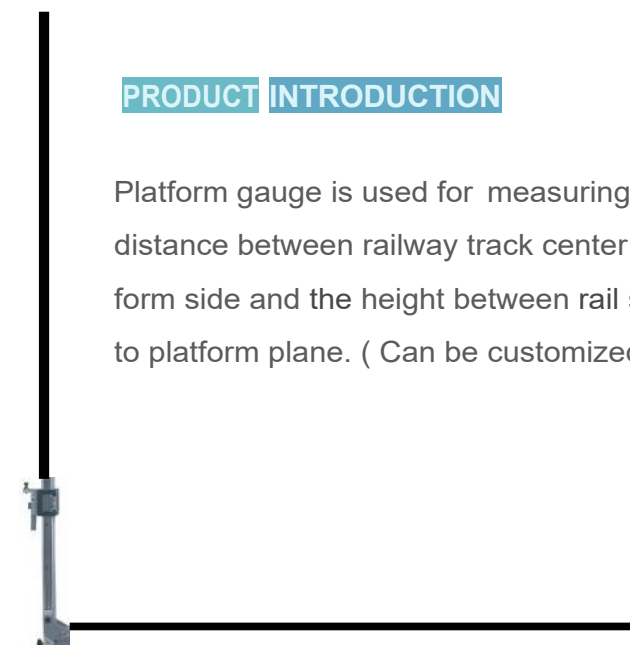
unit(mm)

Model	Horizontal measure range	Vertical measure range	Accuracy
LJ-JCG- I	Customize	Customize	±0.5

## PLATFORM GAUGE

### PRODUCT INTRODUCTION

Platform gauge is used for measuring the distance between railway track center to platform side and the height between rail surface to platform plane. ( Can be customized)



### MODEL PARAMETERS

unit(mm)

Model	Horizontal measurement range	Height measurement range	Accuracy
LJ-TC- I	1500-2200	200-1300	±1

## ROLLING STOCK WHEEL BACK TO BACK GAUGE



### PRODUCT FEATURES

Wheel back to back gauge is used to measure the inner distance of railway locomotive and rolling stock wheelset. Readings are digital display.



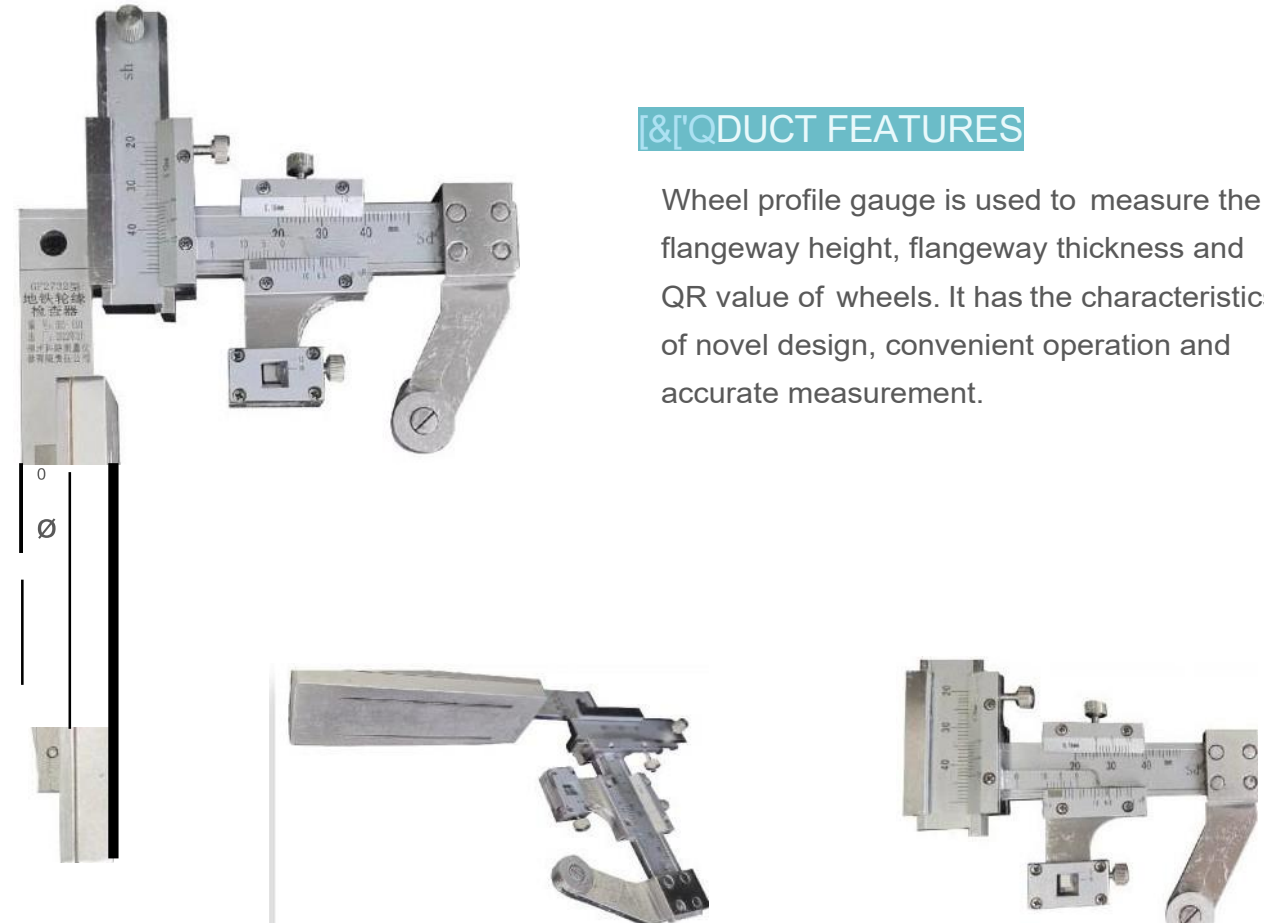
### TECHNICAL PARAMETER

Model	GF982S Wheel back to back gauge
Measure range	1345-1365 mm
Measuring surface accuracy	±0.15mm
Customize	yes
Resolution	<b>0.01MM</b>
Dimensions (L x W x H) (mm)	1600*20*50mm

## WHEEL PROFILE GAUGE

### PRODUCT FEATURES

Wheel profile gauge is used to measure the flangeway height, flangeway thickness and QR value of wheels. It has the characteristics of novel design, convenient operation and accurate measurement.



### TECHNICAL PARAMETER

Model	Measure range (mm)	Indication (mm)	Accuracy (mm)
GF2732	Flangeway thickness: 20-35	0.1	: ±0.1 QR/Flangeway height: -0.2-0
	Flangeway height: 25-37		
	QR value: 0-15		

# RAILWAY MAINTENANCE TOOLS



Switch Point Clamp



Rail Lifting Tong



Rail Carry Tong  
Sleeper Tong



Universal  
Rail Clamp



Nine Teeth Fork



Four Teeth Fork



3 Color Chargeable  
Signal Light



Single Side  
Chamfering Tool



Rail Clamp



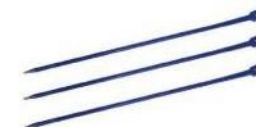
Brake Shoe



Rail Turner



Mechanical Track  
Jack



Rail Crowbar



Cutting Dies



Drilling Bits



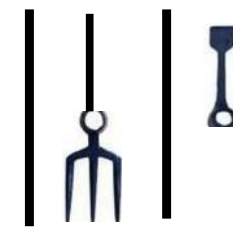
Freight Car Rerailer



Hydraulic  
Track Jack



Grinding  
Stone



Hammer  
Fork&PickaxePickaxe



Rail Roller



Rail Alignment  
Frame



Hydraulic Rail Lining  
& Lifting Jack



Track Gauge  
Adjuster



Hydraulic Sleeper  
Adjuster